

# Sean’s creation lights up minds

By DAVID COHEN

Sean Adamas became an artist while he was studying environmental design at UWA.

The emerging artist, whose latest installation will be on show in Claremont’s ARTTRA Light Festival next month, was asked to help on a prominent Nedlands creation.

“A lecturer asked me if I was available to help [artist] Stuart Green at Perth Children’s Hospital,” Sean (34) said.

“It was a great experience and I helped Stuart with video rendering on his dancing petals.”

Now Sean, like Stuart, creates public art that is experienced by thousands of people.

His Crystallines, for ARTTRA, comprises three tall monoliths with changing colours.

“I’m putting sensors inside so when someone passes by a program will run a random pattern,” Sean said.

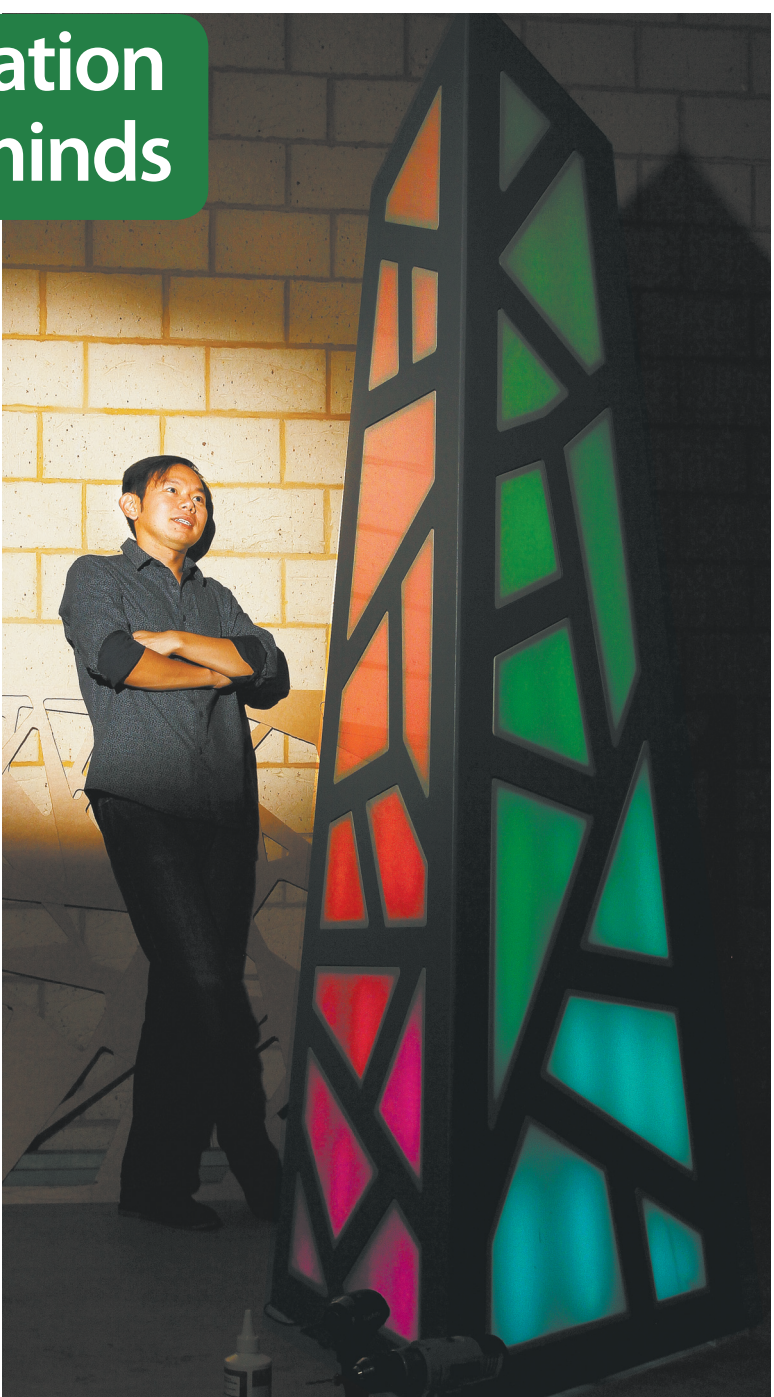
“I still have to solder several dozen LED lights to complete the work.”

The former Christ Church Grammar School student, said he was always intrigued to witness how people interacted with public art.

“I prefer my art to be entertaining and thought-provoking, without going into the political,” he said.

The fifth ARTTRA will feature the creations of 15 local and WA artists, including a special installation by Freshwater Bay Primary School students.

The Claremont Park exhibition is on from 5 to 9pm from Friday to Sunday, April 5 to 7.



Monolith man ... Sean Adamas checks his creation for Claremont council’s annual light festival. Photo: Paul McGovern

**Murder trial podcast at**  
[postnewspapers.com.au](http://postnewspapers.com.au)

**IAN PATERSON’S**  
PAINTING & WALLPAPERING  
RP7109  
**0420 425 689**  
After Hours 9417 7694  
COMMERCIAL RESIDENTIAL  
DOMESTIC

**AT LAST!**  
A doggy daycare in the western suburbs  
Full & half days available  
**CANINE LOUNGE**  
29a Carrington Street, Nedlands  
0433 597 699 | [caninelounge.org](http://caninelounge.org)

# Hollywood attack evidence allowed

By BRET CHRISTIAN

The judge in the Claremont serial killer trial has allowed an attack on a 40-year-old senior social worker at Hollywood Hospital to be linked to three alleged murders and two rapes.

Evidence of that attack will be given by some of the 580 witnesses called for the nine-month Supreme Court trial set to start in July.

Bradley Robert Edwards (50), who has been charged with the murders, admitted the Hollywood attack in Nedlands in 1990, when he was 21.

Mr Edwards, a phone technician, pleaded guilty to the afternoon assault on the social worker after being called to the hospital to fix the exchange board.

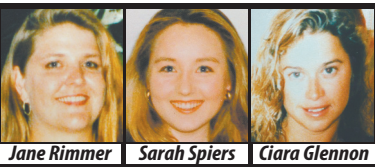
He pleaded guilty to a charge of common assault. A magistrate sentenced him to two years’ probation and ordered him to attend eight months of sex-offender treatment.

The court was told that at the hospital in 1990, Mr Edwards approached the seated woman from behind, put a piece of material over her nose and mouth then began dragging her backwards towards the toilet.

She kicked herself free.

Justice Stephen Hall this week ruled also to allow the murder trial to consider another crime the state alleges was committed by Mr Edwards, a home invasion and attack on a sleeping teenager in 1988.

But the judge excluded from evidence extreme pornography and stories of abduction and rape allegedly found on Mr Edwards’ computer.



Jane Rimmer Sarah Spiers Ciara Glennon

## SERIAL KILLER CASE

“The pornography evidence is not relevant to the facts in issue in this case and is not admissible in respect of any of the counts,” Justice Hall said.

Mr Edwards faces eight charges including the abduction of four young women and the murder of three of them after they had been on nights out in Claremont in the mid-1990s.

He appeared in the court on Wednesday by video link from Casuarina Prison to hear the decision about evidence allowed to be admitted at his trial.

Justice Hall ruled that similarities between the 1990 hospital attack and that on the sleeping 18-year-old girl in 1988 enabled the incidents to be grouped with the abduction of a 17-year-old girl from Claremont’s Rowe Park in 1995.

She was allegedly raped in Karrakatta Cemetery after being driven around for a long period in a commercial van, then made her way to Hollywood Hospital.

A light-coloured Telecom van was seen near the hospital.

Mr Edwards’ lawyer, Paul Yovich, had indicated the defence case for the cemetery rape charges would revolve around identity evidence, the judge said.

A previous court hearing was told that DNA obtained from that

• Please turn to page 40

**Profit from my experience.**  
With my 25 years of local knowledge I can help you successfully achieve the best possible real estate result.  
David Azzopardi 0418 924 950  
Kempton Azzopardi

**TODD’S**  
FURNITURE & AUCTIONS  
**Quality Antique & Collectables Auction**  
Sun 24th March 10am Start  
Viewing Wednesday - Saturday 9am - 4pm  
293 Hawtin Road, Forrestfield  
Antique French clocks, mirrors, lamps, Victorian furniture, 2 x baby grand pianos (incl 1941 Steinway), silver, Persian rugs, Garagenalia, enamel signs, 1641 book, antique tools, art and much more ... MOSTLY UNRESERVED  
**ALSO WEEKLY PUBLIC TRUSTEE ESTATE AUCTIONS, EVERY WEDNESDAY 5PM**  
Largest remaining general auction house in Perth.  
New buyers and vendors welcome  
[www.toddsauctions.com.au](http://www.toddsauctions.com.au)

**MARTIN BOX MARINE**  

 <b>Riviera 47' Coupe</b> Fully reconstructed in 2008 with new Volvo D9 diesels and a remodeled saloon and open cockpit layout creating a fabulous entertainers platform. Spacious three cabin, two bathroom accommodation with an 11Kva Onan generator powering the air-conditioning, washing machine and dishwasher. Visually striking from every angle, this one-off Riviera attracts attention everywhere she goes. This impressive Coupe is the perfect entertainer. <b>\$399,900</b>	 <b>Westcoaster 60'</b> Expedition style vessel for cruising the Coast and Kimberly region. The spacious interior is modern and fresh and offers an owners suite along with a crew or guest quarters for 5 with 2 bathrooms. "Maxi Vision" wheelhouse provides an excellent outlook with a hydraulic bow thruster for ease of handling. Onboard power is provided by a 19Kva Onan generator and the MAN V12 diesel produces 1000Hp. Keenly priced and available for viewing in country WA. <b>\$499,000</b>	 <b>Mustang 42'</b> This 2006 model has completed only 430 hours on the twin Volvo engines which provide comfortable cruising at 23 knots and exhilarating performance above 30 knots when the urge grabs you. Onboard systems including air-conditioning are powered by a 6Kva Kohler generator and the spacious interior has twin cabin accommodation with 2 bathrooms. The helm is equipped with Garmin electronics and a bow thruster for ease of handling. Value buying. <b>\$149,000</b>	 <b>Fury 26'</b> This well known brand are legendary and this example was built by Scott Fury and launched in 2000. The 250Hp Evinrude E-Tec was installed in 2006 and pushes this craft to 35 knots. There is loads of deck space for fishing or entertaining and the bow area has a custom awning for overnighting at the islands. The Duralite tandem axle Aluminium trailer was purchased new in 2016. Reduced to clear. Perfect for annual North West fishing trips. <b>\$54,900</b>	 <b>Wellcraft 222</b> The most popular size in the Fisherman range, the Wellcraft 222 is the perfect offshore weapon. At 6.71m in length, they are ideal to tie alongside your mother-ship at Rottnest and are more than capable of making the crossing in comfort. In stock and available now with the new 225Hp V6 Mercury 4 stroke outboard for 38 knots and great economy at 20 knots. Complete with live bait and catch tanks, toilet and family seating packages. <b>Fr \$99,000</b>
---	--	---	--	---

  
**Ph: 9336 1466 | [www.martinboxmarine.com.au](http://www.martinboxmarine.com.au)**  
1 Capo D'Orlando Drive, Fremantle  
**MARTIN BOX MARINE**